



EQUIPMENT

MEAT & BONE SAW P65-EPF



STANDARD FEATURES

- 65" saw blade
- Light duty countertop design
- 1 HP motor
- Aluminum body with stainless steel base
- Friction resistant saw guides
- Waste tray
- Stainless steel fixed table



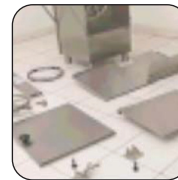
Tensioning System easily adjusted

Assures a proper blade tension for a clean cut and a long lasting blade life.



Avoid accidents

Interlock safety switches on door stops the motor automatically if any of the doors are opened, reducing risk of accidents.



Disassembles easily

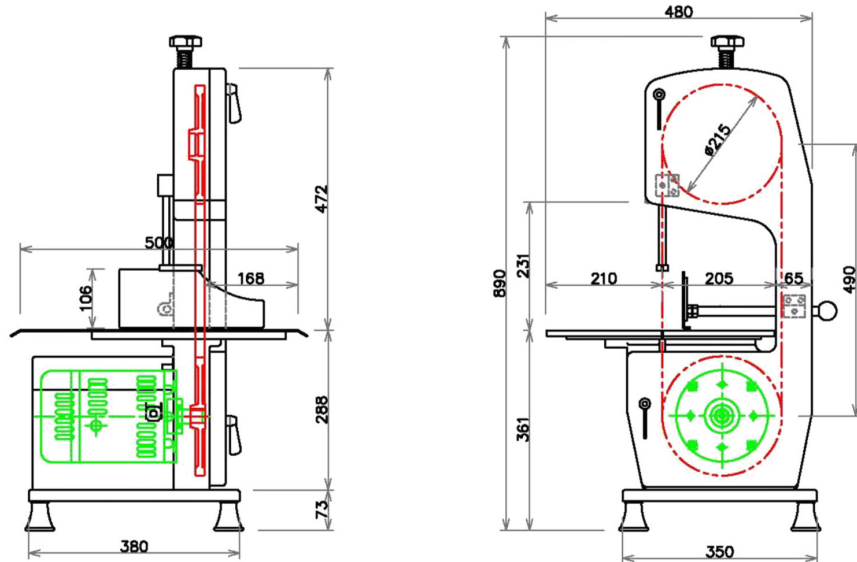
Main components are easily disassembled (without tools) for cleaning and sanitizing, and saw blade can be replaced without the need to disassemble any of the components.

MEAT & BONE SAW P65-EPF

Technical Data

Saw blade (in)	64.96" x .63"
Blade speed	63.98 ft/sec
Throat width (in)	7.87"
Throat height (in)	9.84"
Table dimensions (WxL)	16.34" x 19.69" (415 mm x 500 mm)
Switch type	Toggle
Epoxy enamel	Yes
Waste tray	No
Movable blade guard	Yes
Sealed off bearings	Yes
Non slip silent V-belt drive	No
Net weight	37 Kg
Voltage	220/50/60/1, 220/60/3 or 380/50/3

Detail & Dimensions



As continued product improvement is a policy of Powerline, specifications are subject to change without notice.



POWERLINE EQUIPMENT COMPANY

Pulaski Street, Norwalk, CT 06851 USA. Tel: 203-847 2357 Fax: 203-847 6480

www.powerlineequip.com